

Install PS2 Linux using swap magic / cog swap or independence exploit!!!

Originally adopted from http://forums.afterdawn.com/thread_view.cfm/518881#3141025

Watch a movie of this being done here: <http://myvex.com/ps2linux.htm>

hey... WHOO! I got both PS2 Linux disc backups to boot with Swap Magic or Independence Exploit. (ok my method was out of desperation (n00bin ahaaa!), feel free to tweak it, yo. o_- I hope this works for ya, it did for me.)

**EDIT: "Install PS2 Linux backups on unmodded/softmodded console"
(new tutorial)

What You Need:

Materials:

- 1.) 2 Blank DVDS
- 2.) Swap Magic/MC exploit and Cogswap
- 3.) A PS2 Game (DVD)(One that matches the region of your PS2; NTSC/PAL)
(I used the game Madden. AHA.)

(I also assume you have a fat PS2 with a HDD, Network Adapter, USB Keyboard, and a Memory Card. You need these to use with PS2 Linux... just checkin' ^_^)

Software:

- 1.) Daemon Tools (optional, use if your PS2 Linux discs haven't been burned yet.)
- 2.) Dummy File Creator
- 3.) CD/DVD-ROM Generator 1.5
- 4.) IML2DVD v1.51 by Sonix
- 5.) DVD Decrypter or ImgBurn

Stage 1: "Disc 1 REBORN"

(First, we modify the first disc a little.)

1.) Make a directory on your Desktop called DISC1.

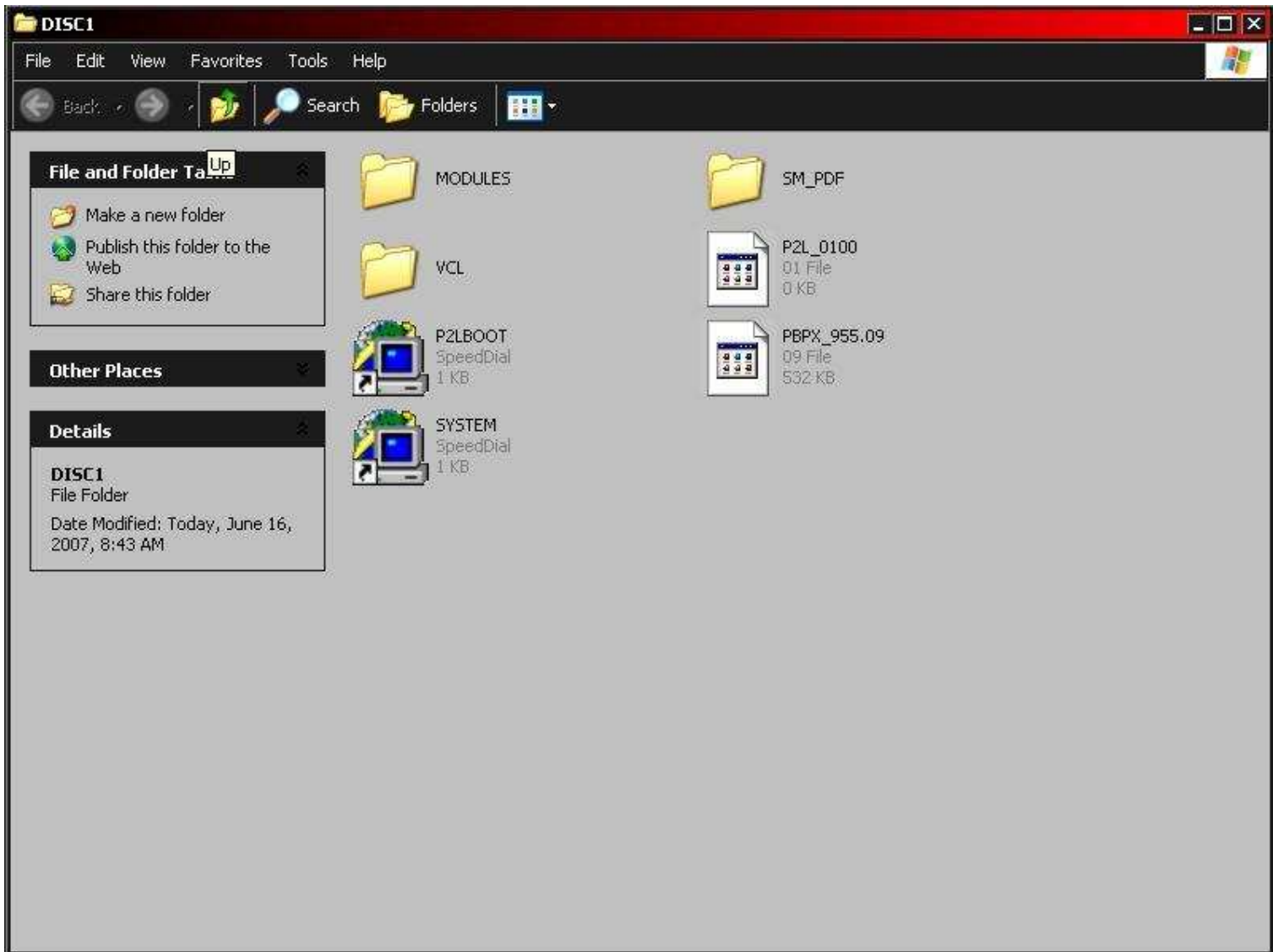


2.) Mount/Insert PS2 Linux Disc 1.

3.) Copy the following files/folders from the first linux disc to that

DISC1 directory you made:

MODULES
SM_PDF
VCL
P2L_0100.01
P2LBOOT.CNF
PBPX_955.09
SYSTEM.CNF



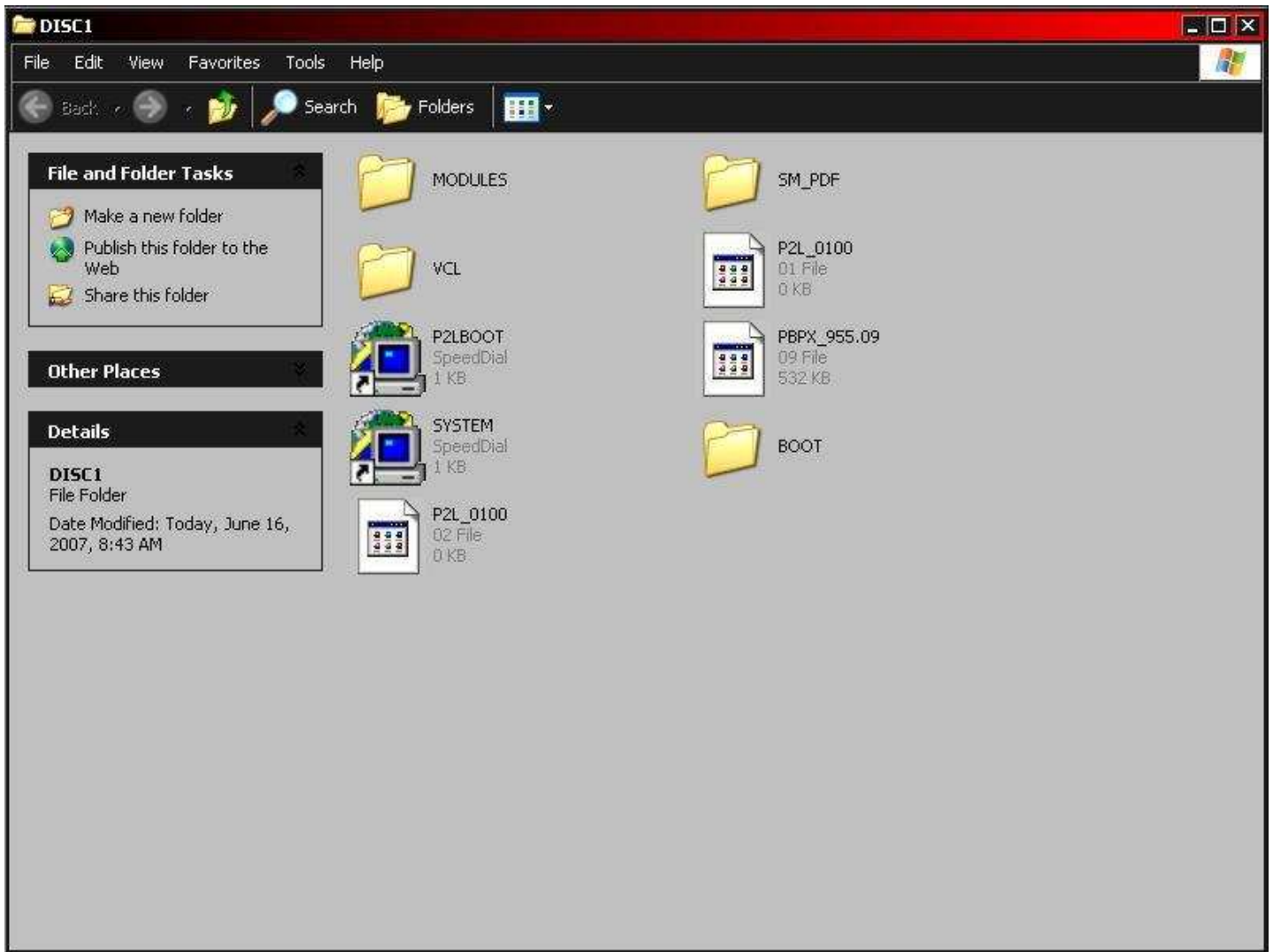
4.) Now, Eject/Unmount PS2 Linux Disc 1 and Mount/Insert PS2 Linux Disc 2.

5.) Copy the following files/folders from the second linux disc to that

DISC1 directory you made:

BOOT

P2L_0100.02



6.) Open the 'Dummy File Creator'.

7.) Change the drop down menu from Bytes to MB.

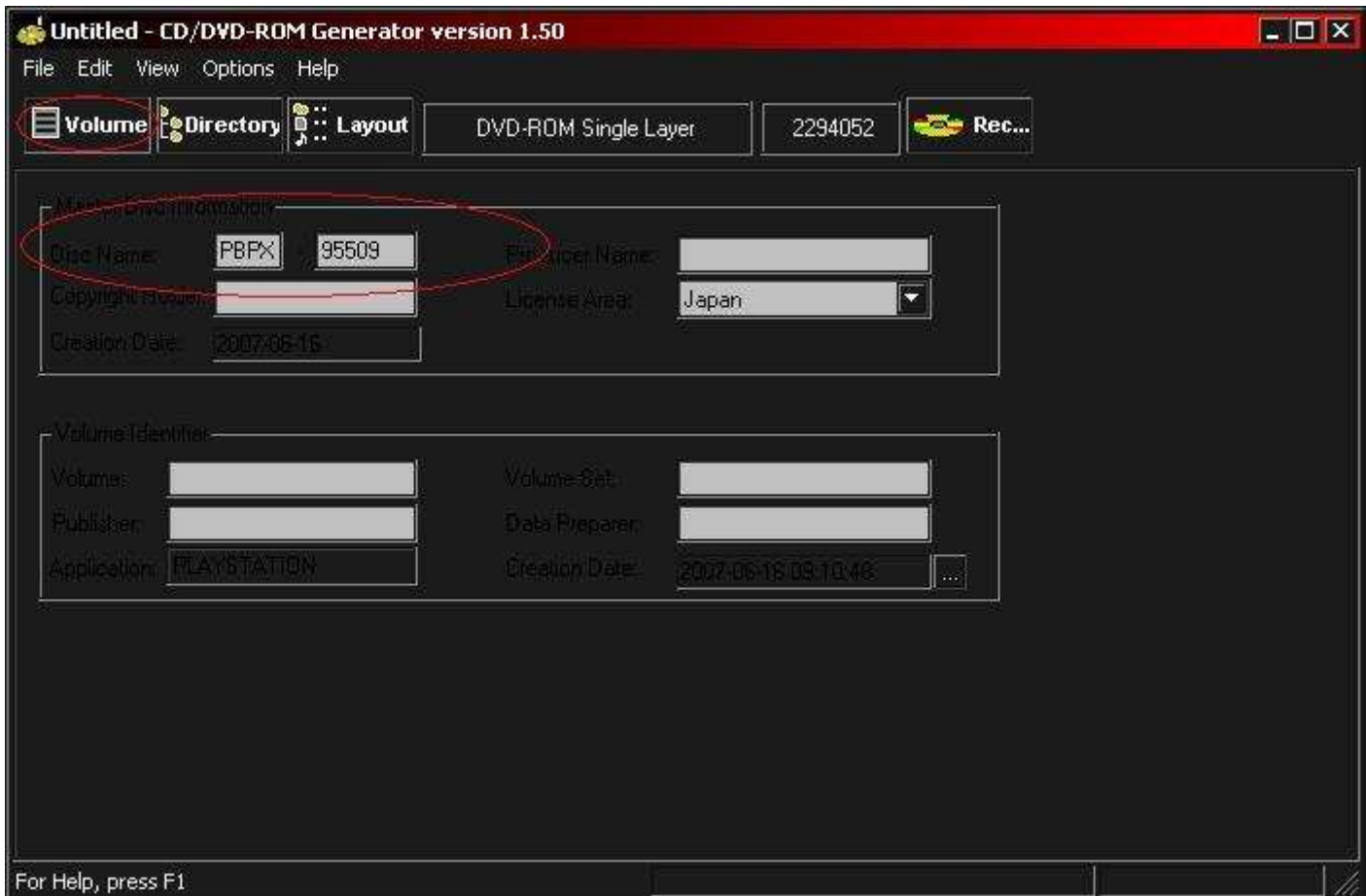
8.) In the File Size Box type 1200. (anything at least 1200 will do)



9.) Click Browse, Find your DISC1 folder on the Desktop. For file name type 'DUMMY.DAT' and on the drop down menu below change 'Text Files (*.txt)' to 'All Files (*.*)'.



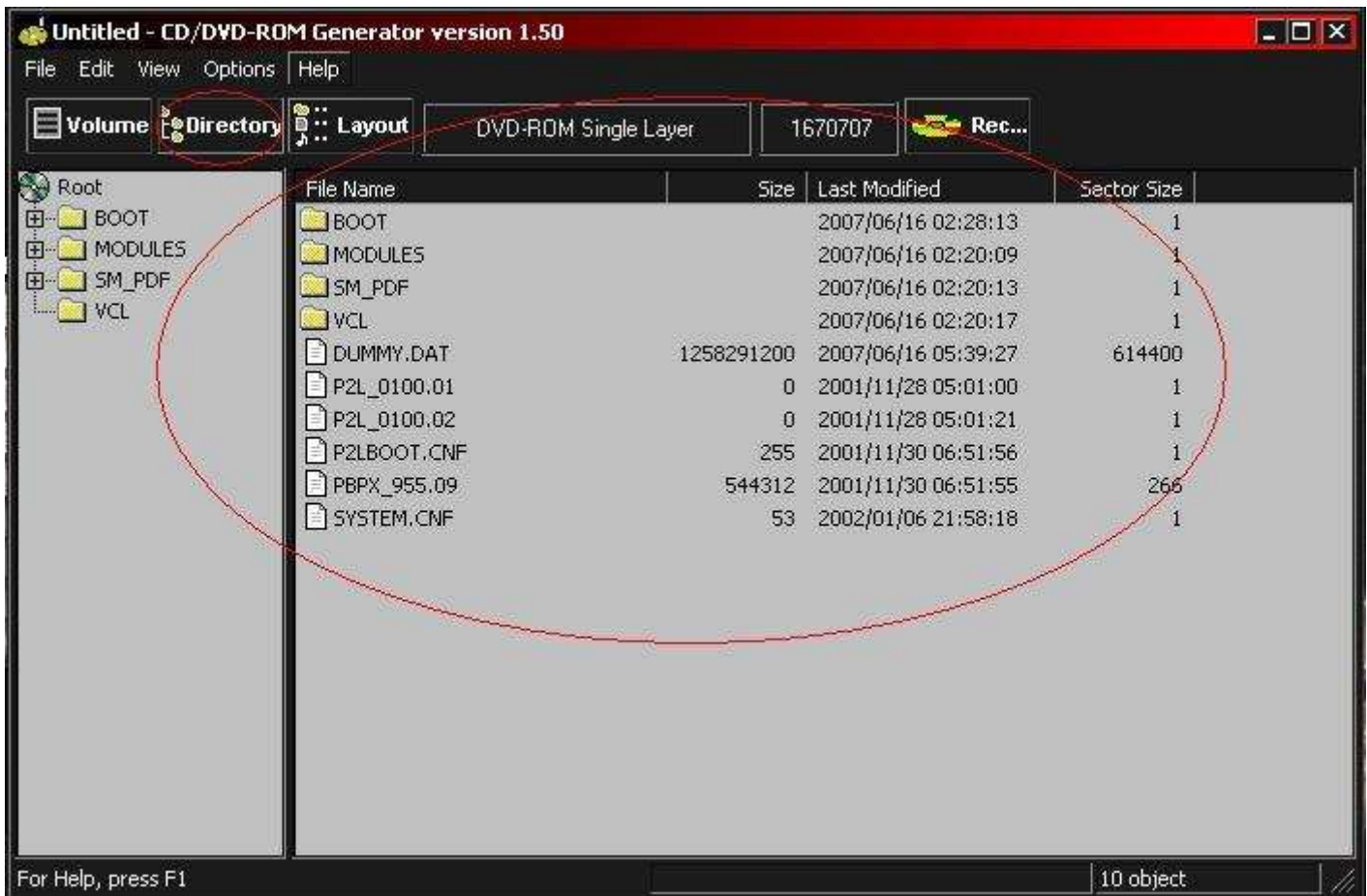
- 10.) Click Save.
- 11.) Leave 'Random file Content' unchecked.
- 12.) Click Create. Wait for it. O_o
- 13.) Open the 'CD/DVD-ROM Generator 1.5'.
- 14.) Select 'Create New Project' then 'DVD-ROM Master Disc'.
- 15.) Click the Volume tab, in the Disc Name Box type: PBPX 95509



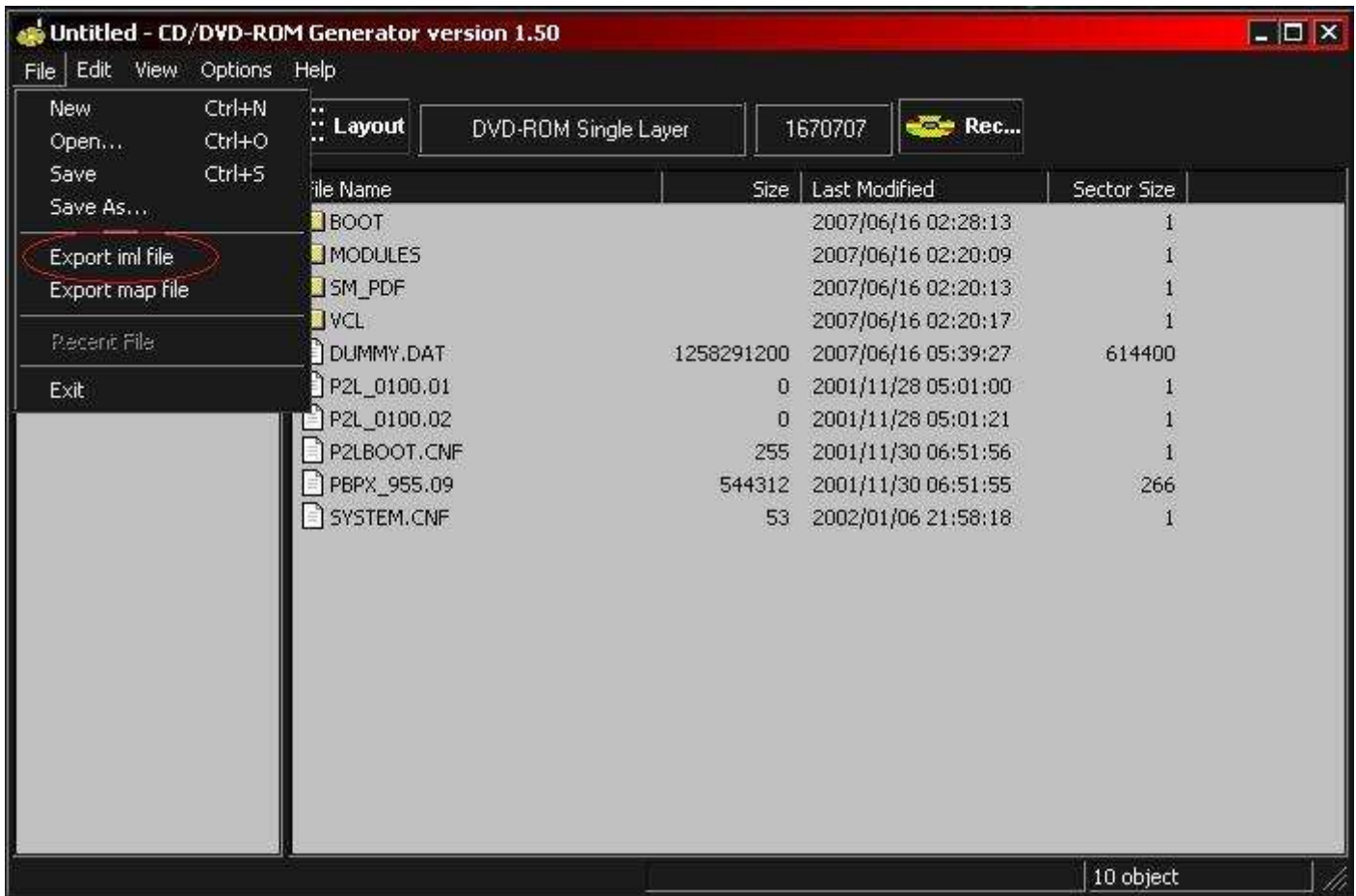
16.) Click the Directory tab; Drag and Drop the following files/folders

(from your DISC1 folder) in this order:

BOOT
MODULES
SM_PDF
VCL
DUMMY.DAT
P2L_0100.01
P2L_0100.02
P2LBOOT.CNF
PBPX_955.09
SYSTEM.CNF

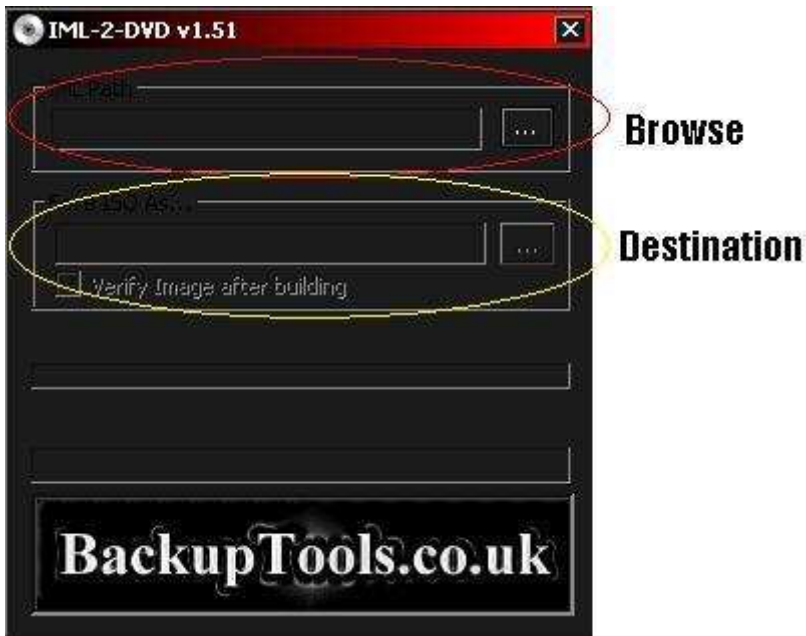


17.) Now go to 'File' and select 'Export IML File'. (Export to Desktop or new folder on the Desktop.)



18.) Close the 'CD/DVD-ROM Generator' and open 'IML2DVD 1.51'.

19.) Click the Browse button and locate the IML file you exported then set a destination.
(as soon as you set a destination it starts creating the new iso.)



20.) Once its finished you may now burn your new DISC1 iso. (also burn DISC2 if you haven't already.) Burn with DVD Decrypter or ImgBurn.

Stage 2: "The Setup"

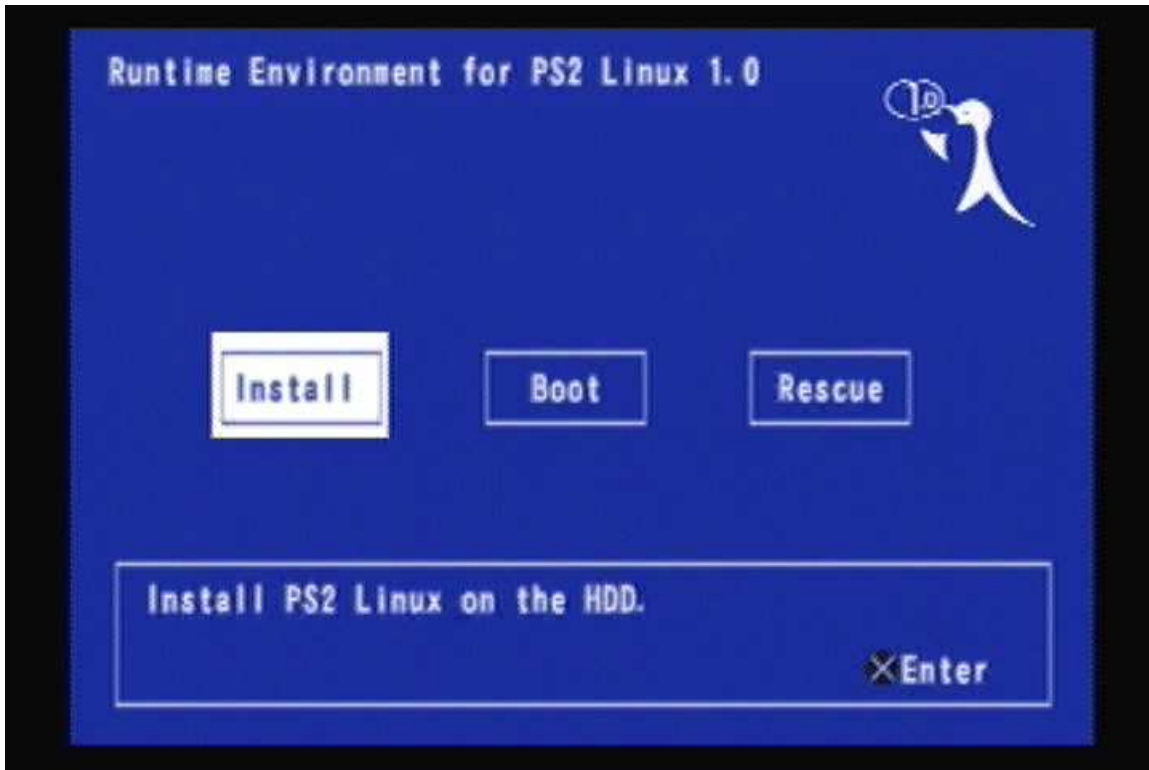
(The installation with your PS2 Linux Backup)

- 1.) Boot up your PS2. (with keyboard connected, memory card inserted, and HD/network adapter all setup.)
- 2.) Boot up your Swap Magic/MC exploit and load your new PS2 Linux Disc 1.
- 3.) If using a TV:
(Hold while the disc is booting up RTE.)

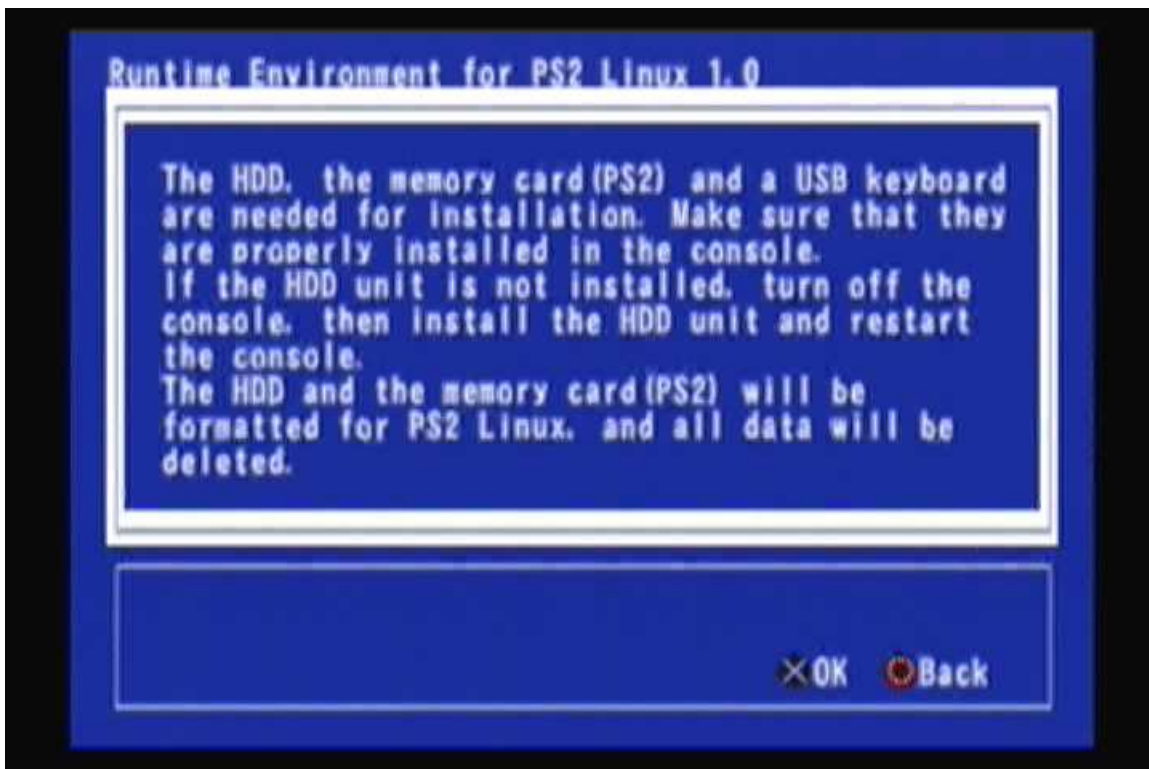
Hold Select+R1 for NTSC mode
Hold Select+R2 for PAL mode

Otherwise it will boot in VGA mode.


- 4.) Select 'Install'.



5.) It will tell you that you need an HDD, MC, and USB keyboard (but you knew that already o_-), it also warns you about the HDD and MC being formatted. Press X.



6.) Then it starts to load the Kernel.

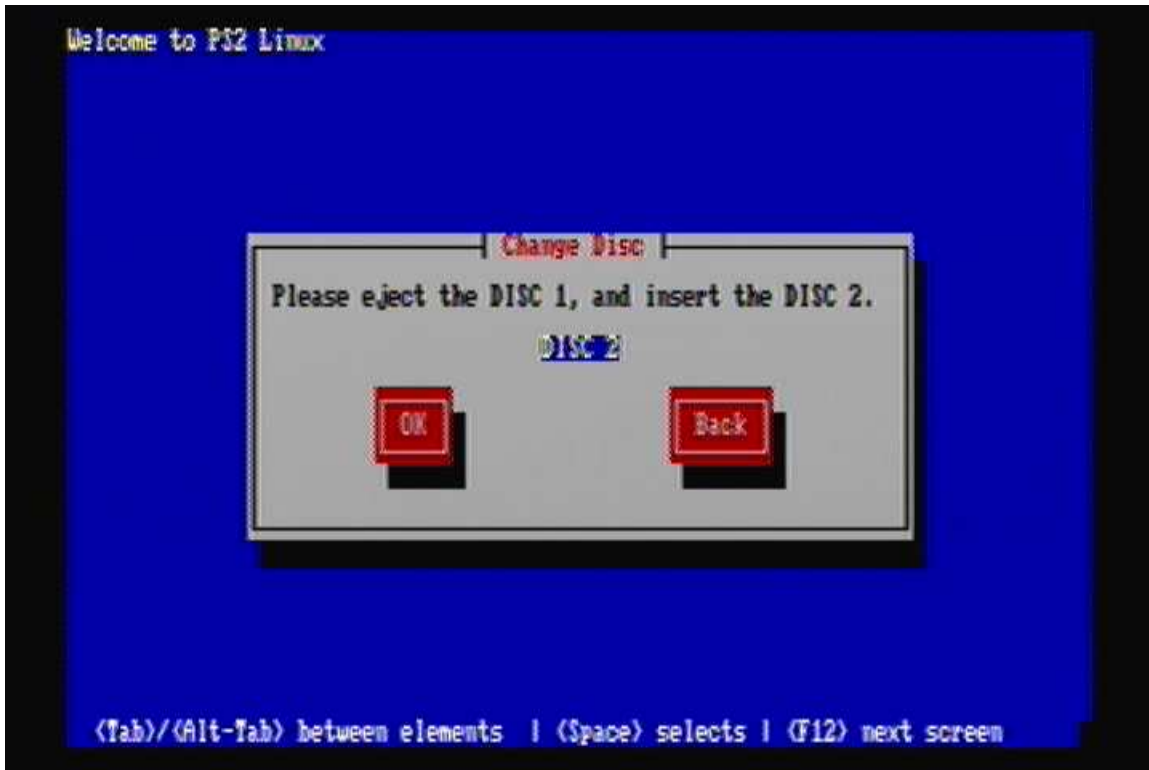


```
Based upon Swansea University Computer Society NET3.039
NET4: Unix domain sockets 1.0 for Linux NET4.0.
NET4: Linux TCP/IP 1.0 for NET4.0
IP Protocols: ICMP, UDP, TCP, IGMP
Linux IP multicast router 0.06 plus PIM-SM
Starting kswapd v 1.5
PlayStation 2 device support: GIF, UIF, GS, UU, IPU, SPR
Graphics Synthesizer revision: 000005519
Console: switching to colour PlayStation 2 Graphics Synthesizer 80x28
pty: 256 Unix98 ptys configured
usb.c: registered new driver usbdevfs
usb.c: registered new driver hub
usb.c: registered new driver usb_mouse
usb.c: registered new driver keyboard
usb-ohci.c: USB OHCI at membase 0xf801600, IRQ 42
usb.c: new USB bus registered, assigned bus number 1
usb.c: USB new device connect, assigned device number 1
hub.c: USB hub found
hub.c: 2 ports detected
RAM disk driver initialized: 1 RAM disks of 10240K size
loop: registered device at major 7
PlayStation 2 IDE DMA driver
```

7.) The next screen says 'What Language should be used during the installation process?' (I think the only option is English) So, press Enter on your keyboard.

8.) The next screen says 'What type of keyboard do you have?', find your keyboard type and press enter.

9.) The next screen is the "Change Disc" screen. It says 'Please eject the DISC 1, and insert the DISC 2.'



OK, get your PS2 Game (DVD), press eject on your console and put the game in.

10.) Once its in, press enter. The screen will say 'Checking Disc 2'.

Then, after a little while, an "Error" message will pop up.



(it says: Cannot find the DISC 2 in the disc tray. Insert the DISC 2 into disc tray, then press "OK" to retry.)

11.) Press tab then press enter to go back to the "Change Disc" screen.



12.) Get your PS2 Linux Disc 2 ready and perform the disc swap. (Swap it whether it is spinning or not.) (Every time I've done this, the disc wasn't spinning, there was one time it was... but that was a fluke.)

Then press enter.

13.) It will go back to the 'Checking Disc 2' screen. Wait about 30 seconds to a minute. (it will be reading the disc o_o)



14.) The next screen will be the 'Welcome' screen! Congrats! Press Enter to continue with the installation! JOY!



Then just follow the rest of the installation.

This guide can help you finish the installation:

http://playstation2-linux.com/download/cfyc/HOWTO_blindly_install_ps2linux.html

Lil' Notes:

-During the installation, you have to setup partitions. For ease of use I recommend using the Disk Druid (make one normal and one swap) instead of Fdisk.

-Also I recommend the Full Installation rather than the 'Window Maker' Installation because Full = all the packages! AHA...

-Once setup and logged. To view/setup Guis or Window Managers (like GNOME or KDE, etc) type sdr.

To Boot them type: startx

For NTSC type: startx -- -screen 0 NTSC

For PAL type: startx -- -screen 0 PAL

-If you need help finding any of the software mentioned, spam da Google or ask me and we'll link ya up foo.

...ok... well... hope it works for ya...

...peace...

Watch a movie of this being done here: <http://myvex.com/ps2linux.htm>